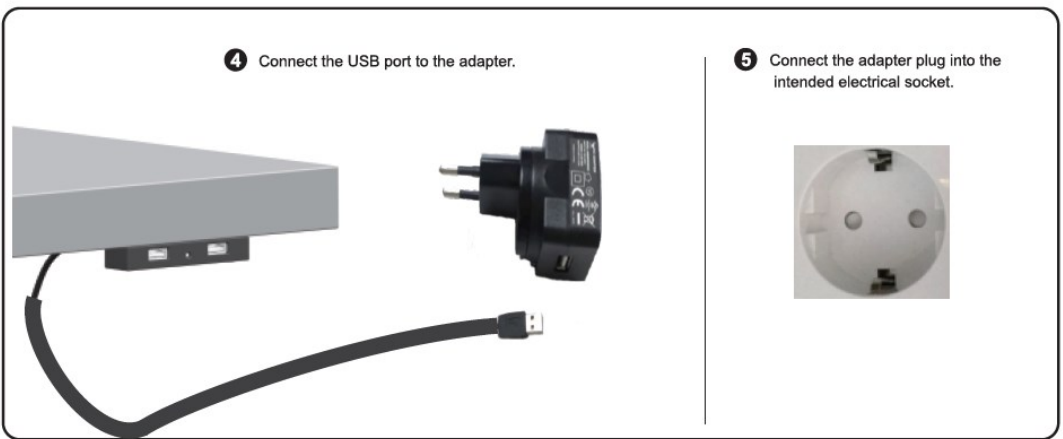
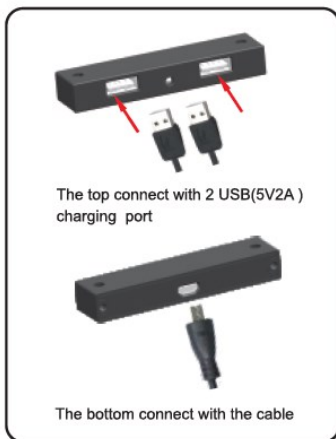
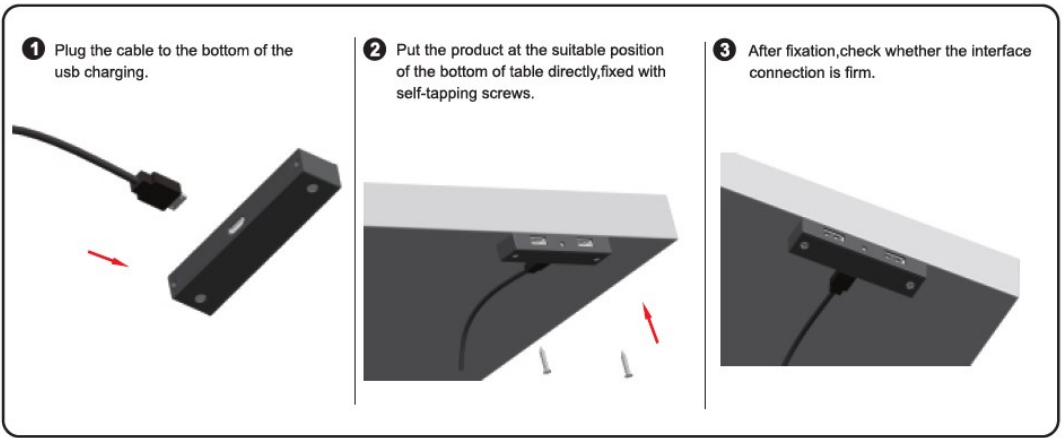
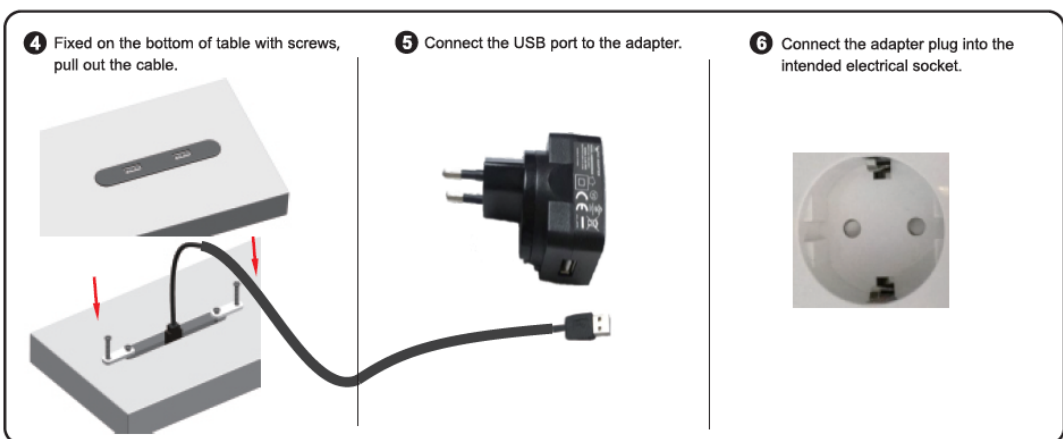
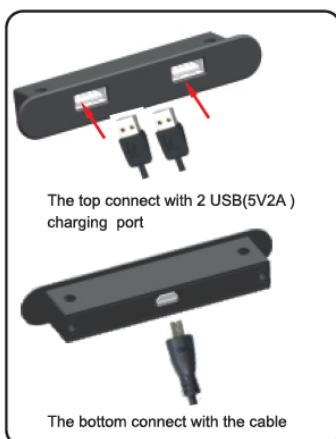
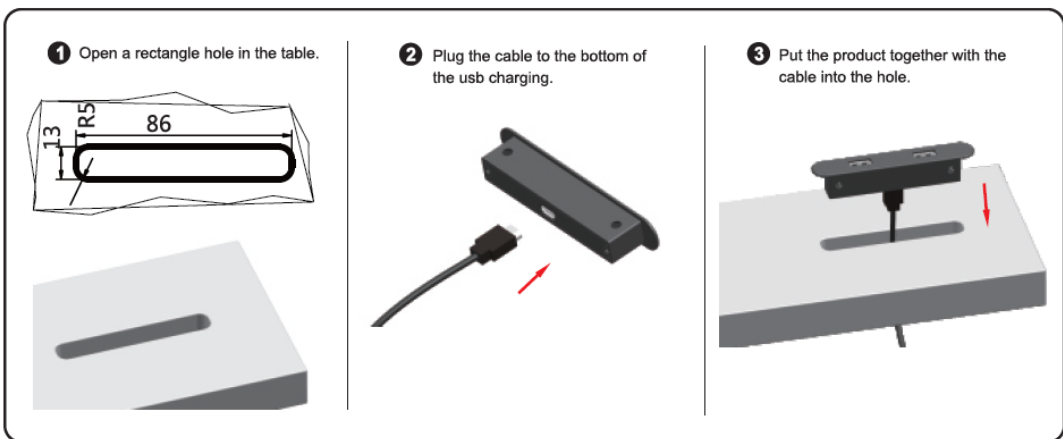


Installation Option one



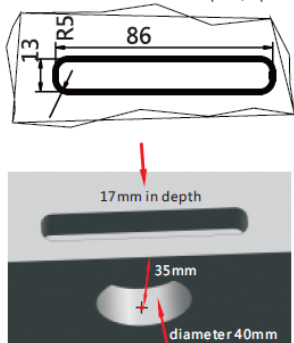
Installation Option two



Installation Option three



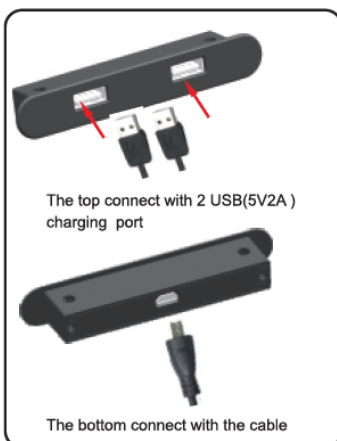
1 Open a rectangle hole at the side panel of the table with 45mm in depth. Meantime open a diameter 18mm round hole on the bottom plate, depth 15mm.



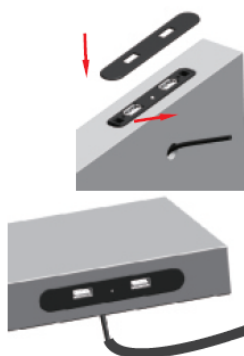
2 Remove the rectangular panel and put away separately. Plug the cable to the bottom of the USB charging.



3 Embedded the product together with the cable into the hole of the desktop side panel. Pull out the cable through the round hole, then fixed with screws at the side panel.



4 Fix the rectangular panel onto the product and pull out the cable.



5 Connect the USB port to the adapter.



6 Connect the adapter plug into the intended electrical socket.

